

Canon

 **Color
imageRUNNER**
C1030 / C1030iF

multifunction
compact design
color printing and scanning
managed print services ready






OFFICE SOLUTIONS



At-a-Glance



Color imageRUNNER C1030 / C1030iF

-  **Copy/Print/Send/Fax***
-  **Up to 8-1/2" x 14"**
-  **Up to 600 x 600 dpi**
-  **Color printing and scanning**
-  **Managed Print Services ready**

Powerful performance

- > Robust imageCHIP LITE system architecture
- > UFR II LT, PCL 5c/6 and PostScript 3 Emulation**
- > 768MB RAM standard
- > Standard Ethernet and USB 2.0 High Speed

Impressive productivity

- > Up to 30-/22-ppm printing (BW/Color; Letter)
- > Up to 20-ipm scanning at 300 dpi (Letter)
- > Standard 250-sheet paper cassette
- > 100-sheet stack bypass tray
- > 50-sheet auto-duplexing document feeder
- > Auto-duplex printing and scanning
- > Up to 850-sheet maximum paper capacity

Exceptional usability

- > Intuitive 3.5" color TFT LCD display panel
- > Scroll wheel for simple navigation and entry
- > On-screen animations for guided setup and help
- > USB memory media and flash memory support

Ready for Managed Print Services

- > Support for Canon imageWARE Enterprise Management Console
- > Support for Canon imageWARE Remote

* Fax functions are standard on the Color imageRUNNER C1030iF model and optional on the Color imageRUNNER C1030 model.

** PCL 5c/6 is standard on the Color imageRUNNER C1030iF model; PostScript 3 is optional on both models.

Reliable, enterprise-level color document workflows. Compact productivity with uncompromising dependability.

Remarkably easy to use

Designed to meet the unique needs of small- to mid-size businesses and enterprise workgroups, the new Canon Color imageRUNNER C1030/C1030iF models deliver stunning color output and convenient scanning combined with available sending and advanced features to make document workflow a breeze. Rather than having to choose between a single-function printer and a larger MFP with features you don't need, the Color imageRUNNER C1030/C1030iF models incorporate a unique balance of performance and productivity in a configuration that can grow with your business.

Solid dependability

The Color imageRUNNER C1030/C1030iF models have been designed with remarkable productivity and reliability in mind. Each model has been built to handle rigorous use and requires minimal maintenance, providing greater uptime for your business whether you're at headquarters or a remote location. For longer, continuous operation without interruption, each device is constructed from rugged components and provides an ample paper supply and high-yield, all-in-one toner and drum cartridges that are simple to replace.

Small size, big productivity

Bold capabilities in a compact size make the Canon Color imageRUNNER C1030/C1030iF models an ideal choice for small offices, front desks, remote locations, and groups of corporate users. Numerous innovations in print engine design and document feeding technology mean you'll also save precious space while delivering more advanced document workflow productivity.

Ready for Managed Print Services

Lower IT costs and reduce the burden of managing your systems with Canon's powerful, centralized management tools and remote access utilities. The tools allow administrators to distribute settings, set security privileges, and more, while allowing your Canon Authorized Dealer to remotely and securely support devices and capture usage statistics.

Even greener

Canon's commitment to protecting and sustaining the environment is stronger than ever. All new imageRUNNER systems incorporate environmentally responsible technologies that further conserve energy and resources, reduce CO₂ emissions, and help prevent pollution throughout the entire product life cycle.

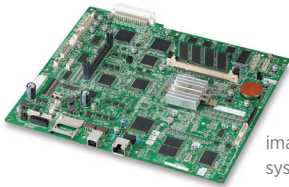


UNCOMPLICATED PERFORMANCE

Expand your document workflow horizons.

Compact performance

The Color imageRUNNER C1030/C1030iF models are remarkably compact and versatile, easily fitting on a desktop or in a centralized area using an available additional cassette or cabinet for walk-up convenience. Regardless of the placement, usability is simple with the stunning 3.5" color LCD that can be tilted to an angle that's comfortable for anyone.



imageCHIP LITE
system architecture

Despite their size, the Color imageRUNNER C1030/C1030iF models pack a powerful architecture based on the latest imageCHIP LITE platform that provides proven performance for handling concurrent print, copy, scan, fax, and send jobs. Each model has ample RAM, built-in Ethernet, dual USB 2.0 ports, and a host of advanced functionality to enhance productivity. The systems also include Canon's Color RAPID Fusing System, which delivers short wait times between jobs, fast warm-up and first-copy-out times, and low energy consumption.

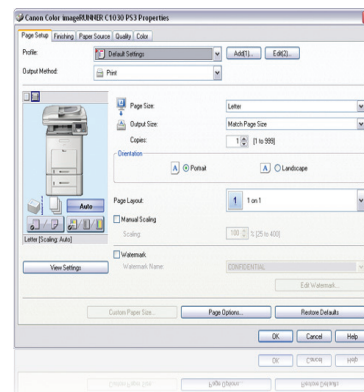
Exceptional quality

Support for Canon's innovative UFR II LT print language is standard on each model, and the Color imageRUNNER C1030iF includes PCL 5c/6 support as standard. For more advanced workflows, PostScript 3 Emulation is also available as an option on both systems. UFR II LT is optimized to

produce high-speed output by automatically sharing processing tasks between the desktop computer and the device. PostScript 3 Emulation support delivers accurate rasterization of PS3 print data, particularly useful for design, publishing, education, and healthcare businesses. Canon's print driver interface is consistent throughout the entire imageRUNNER line, simplifying output and ensuring a familiar user experience across devices. To keep productivity moving even when your desired paper size is unavailable, the Force Print feature will substitute another suitable size for output.

Brilliant color and richer black

Both systems produce high-quality color output and accurate gradients through Canon's oil-free S Toners, which have been specifically engineered for uniformity in size and shape with a gloss-free look for superb results. And unlike other printers, the Color imageRUNNER C1030/C1030iF models feature Pure Black technology to produce black text and lines on the page with greater clarity using the black toner instead of mixing CMYK colors.



Driver User
Interface



Full-color LCD
interface



DADF
The Standard DADF
quickly scans up
to 50 sheets
in black and white
or color.

Duplex color scanning

Whether you need to capture a single page or scan up to 50 sheets of paper, the Color imageRUNNER C1030 Series' color image reader can quickly create copies and electronic versions of your documents at up to 20 ipm in either color or black and white (letter). The new ID Card Copy feature also streamlines the reproduction of double-sided cards by automatically printing each side two-up on a single page.

Document distribution

Increase your productivity with color sending capabilities that enable you to electronically distribute documents or save them to removable media. The systems support popular formats, including TIFF, JPEG, PDF, PDF High Compression, and Searchable PDF.

Send. Easily distribute documents to e-mail, fax, I-fax, SMB, and FTP destinations, and even facilitate delivery to back-end applications and document management systems. For additional protection against data leakage, the standard User Authentication for Send Operation can be enabled to prompt users for their credentials prior to accessing the Send screen.

Fax. Short on office space, but still need to fax? Consolidate your fax needs with printing, copying, and scanning technology to save space and operating costs. Canon has you covered with available on-board faxing,* so you can send and receive faxes at the Color imageRUNNER system. You can even send and receive paperless faxes via your networked computer, saving time and paper costs.



Cartridge Panel



Flash Memory Interface

USB Memory Interface

USB memory and flash media support

For the ultimate in document portability, scanned pages can be saved as electronic files using the Scan-to-USB Memory function. You can output documents when needed—even when you don't have access to a computer—with the Direct Print feature. This allows the reading of TIFF or JPEG files stored on a USB memory device or SD/MMC/CompactFlash media card.

Direct Print provides a color preview of each image to quickly output individual images with brilliant quality. Use the Index Print feature** to create contact sheets of all stored images with up to 20 photos on a single letter-sized page. For larger prints of multiple images, the Layout Print feature** can output two or four photos per page.

High reliability

Remote offices need reliable equipment since they may not be easily accessible by support professionals. Likewise, larger offices are trying to trim costs and reduce demands upon their IT staff. The Color imageRUNNER C1030/C1030iF models make it easy for organizations of any size to consolidate systems for easier maintenance and management through highly durable components and remote administration capabilities.

Streamlined maintenance

The Color imageRUNNER C1030/C1030iF models have been designed with front-load access to all consumables, providing quick replenishment with minimal downtime. The devices also use all-in-one cartridges to minimize the number of replacement parts needed to maintain uptime. Maintenance and error recovery are facilitated through on-screen guides and tutorials on the control panel as well.

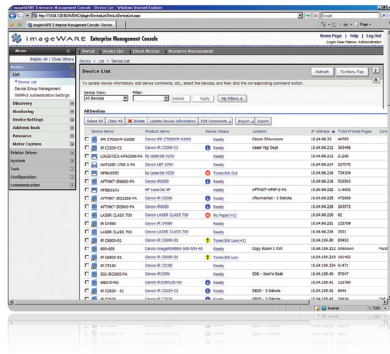
* Fax functions are standard on the Color imageRUNNER C1030iF and optional on the Color imageRUNNER C1030 model.

** Supports JPEG images.

Kinder to administrators. Gentler on the environment.

Easy system management

Managing Canon imageRUNNER systems is simple using Canon's Web-based tools. For single devices, users and administrators can securely access the device via a standard Web browser by using the integrated Remote UI interface. Larger numbers of imageRUNNER systems can be efficiently managed via the no-charge* imageWARE Enterprise Management Console. The Color imageRUNNER C1030/C1030iF models also fully integrate with Canon tools available to your Canon Authorized Dealer, so they can proactively and securely monitor usage and service information, saving you valuable time and resources.



imageWARE Enterprise Management Console

Unleash more advanced control over your document workflows with built-in support for Canon's uniFLOW** option. Enable quick user authentication for walk-up operations using PIN codes or automate log-in using many popular magnetic swipe or proximity cards. For accurate tracking of costs by project, the client billing code feature prompts users to choose a cost center prior to performing copy operations. Protect the security of information, reduce waste, and enable output from any device on the network with the Universal Secure Print feature, which releases jobs on demand only after the proper credentials have been entered.

Eco-Conscious

As an industry leader in environmental responsibility, Canon is a partner to help achieve your green-conscious goals. The Color imageRUNNER C1030/C1030iF models are remarkably energy efficient, using approximately 1W of electricity in Sleep Mode. Yet Canon's technology can warm up quickly from this point to combine high productivity with minimal energy usage. With standard support for duplex and N-up printing, these systems can easily save on the cost of consumables. From responsible manufacturing and smart transportation to reduced energy use and long-life consumables, Canon is dedicated to being a friend to both the environment and your budget.

Enhanced authentication and security

Administrators can limit access to the Color imageRUNNER C1030/C1030iF models to only authorized users by enabling the standard Department ID or User ID security features. Prior to using the copy, scan, send, or print functions, users will need to enter the appropriate credentials or use the available Control Card/Card Reader system. Additionally, administrators can set usage ceilings for color/black-and-white copies, scans, and printouts per Department ID to help control costs. Document output can be protected with the new Serverless Secure Print option, which holds the print data on the client desktop until the user has been authenticated at the device. Additionally, the systems can perform all their powerful functions without an internal hard disk drive, thus eliminating concerns over confidential data retained on the MFP.



* The core imageWARE Enterprise Management Console software and most plug-ins are available as no-charge downloads; certain plug-in modules are chargeable options.

** Supports uniFLOW V5.0 or later.

Color imageRUNNER C1030/C1030iF

Enhance your productivity with an array of optional accessories.



Connectivity Options

PCL Printer Kit-AK1*

PS Printer Kit-AK1

Serverless Secure Print Module

Barcode Printing Kit-C1

Super G3 Fax Board-AB1*

Paper Feeding Options

Cassette Feeding Unit-AB1**

- 500-sheet capacity
- 16 lb. Bond to 32 lb. Bond
- Supports up to 8-1/2" x 14"

Cabinet Type-A**



Accessibility Options

Braille Label Kit-E1

Handset-J1

Card Reader-E1

Convenience Stapler-A1

* Standard on Color imageRUNNER C1030iF model only.

** The Cassette Feeding Unit-AB1 and Cabinet Type-A cannot be installed at the same time.

Note: For additional options and specifications, please refer to the back page.

Product Specifications

Main Unit

Operation Panel	
3.5" TFT Color LCD Screen	
Memory	
Standard:	768MB RAM
Maximum:	768MB RAM
Network Interface Connection	
Ethernet 10/100Base-TX	
Other Interface	
Standard:	USB 2.0 (Host)x2 USB 2.0 (Device)x1
Copy/Print Speed (Color/BW)	
Up to 22/30 ppm (Letter)	
First-Copy-Out Time (Letter)	
Less than 13 Seconds	
Paper Sources (20 lb. Bond)	
Standard:	250-sheet Paper Cassette 100-sheet Stack Bypass
Optional:	500-sheet Paper Cassette Feeder
Maximum:	850 Sheets
Output Paper Capacity	
250 Sheets	
Output Paper Sizes	
Drawers:	Legal, Letter, Executive
Bypass:	Legal, Letter, Statement, Executive, Envelopes (COM10 No. 10/ Monarch/DL/ISO-B5/ISO-C5), Custom Size (3" x 5" to 8-1/2" x 14")
Acceptable Paper Weights	
Drawers:	16 lb. Bond to 32 lb. Bond (60 to 120g/m ²)
Bypass:	16 lb. Bond to 47 lb. Bond (60 to 176g/m ²)
Duplexing	
Paper Size:	Standard Automatic Trayless Duplexing (Letter and Legal)
Warm-up Time	
From Power On:	60 Seconds or Less
From Sleep Mode:	19 Seconds or Less

Power Requirements	
120V-127V, 60Hz, 15A	
Plug	
NEMA 5-15P	
Power Consumption	
Maximum: Less than 1300W From Sleep Mode: 1W	
Dimensions (H x W x D)	
24-7/8" x 21-1/2" x 20-3/4" (632mm x 546mm x 527mm)	
Installation Space (W x D)	
21-1/2" x 44-7/8" (546mm x 1140mm) (with drawer pulled out and back cover open)	
Weight	
Approximately 96 lb. (44kg)	
Toner (Estimated Yield at 5% Coverage)	
Black:	6,000 Images
Color (CMYK):	6,000 Images

Document Feeder

Scan Method	
Duplexing Automatic Document Feeder	
Acceptable Originals	
Paper Size:	Statement to Legal
Paper Weight:	One-sided Scanning (1 page): 13 to 34 lb. Bond (50 to 128g/m ²)*
	One-sided Scanning (more than 2 pages): 13 to 28 lb. Bond (50 to 105g/m ²)**
	Two-sided Scanning: 17 to 28 lb. Bond (64 to 105g/m ²)
Scan Speed (BW/Color; Letter)	
20 ipm (300 dpi) 20 ipm (600 dpi)	
Paper Capacity (20 lb. Bond)	
50 Sheets	

Print Specifications

Printing Resolution	
600 x 600 dpi (2400 dpi Equivalent x 600 dpi)	
PDL Support	
Standard:	C1030: UFR II LT C1030iF: UFR II LT, PCL 5c/6
Optional:	C1030: PCL 5c/6, PostScript 3 Emulation C1030iF: PostScript 3 Emulation
Print Driver Supported OS	
UFR II LT, PostScript 3 Emulation:	Windows® (Windows 2000/XP/Windows Vista/Windows 7/Server 2003/Server 2008), Citrix Presentation Server 4.0/4.5, Citrix XenApp 5.0, XenDesktop 2.0/2.1/3.0/4.0, Macintosh® (OS X 10.4 or Greater), SAP (PS3 only)
PCL 5c/6:	Windows (Windows 2000/XP/Windows Vista/Windows 7/Server 2003/Server 2008), Citrix Presentation Server 4.0/4.5, Citrix XenApp 5.0, XenDesktop 2.0/2.1/3.0/4.0, SAP

Direct Print	
Supported Media:	USB Memory, SD Secure Digital Memory Card, SDHC Memory Card, Compact Flash (CF) Card: Type I/II (3.3V), Microdrive, Memory Stick, Memory Stick PRO, miniSD Card, [†] microSD Card, [†] Memory Stick Duo, [†] Memory Stick PRO Duo [†]
Data Format:	TIFF, JPEG

Send Specifications

Sending Method	
E-Mail, I-Fax, File Server (FTP, SMB), Super G3 Fax (Standard on C1030iF; Optional for C1030)	
Color Mode	
Color, BW	
Communication Protocol	
File:	FTP (TCP/IP), SMB (TCP/IP)
E-Mail/I-Fax:	SMTP, POP3, I-Fax (Simple)

File Formats	
TIFF, JPEG, PDF, PDF (Compact), PDF (OCR)	
I-Fax Data Format	
TIFF	

Fax Specifications

Super G3 Fax Board-AB1 (Standard on C1030iF; Optional for C1030)	
Number of Connection Lines:	1 (Maximum)
Modem Speed:	33.6 Kbps
Compression Method:	MH, MR, MMR, JBIG
Sending/Recording Size: Statement to Legal	

Other Optional Accessories

- Cabinet Type-A^{††}
- Handset-JT^{†††}
- Barcode Printing Kit-C1[▲]
- Card Reader-E1^{▲▲}
- Card Reader Attachment Kit-F1
- Braille Label Kit-E1
- Serverless Secure Print Module^{▲▲▲}

* 17 to 34 lb. (64 to 128g/m²) when copying originals smaller than LTR/A4.

** 17 to 28 lb. (64 to 105g/m²) when copying originals smaller than LTR/A4.

[†] Memory cards that can be inserted into the slot using an adapter.

^{††} The Cassette Feeding Unit-AB1 and Cabinet Type-A cannot both be installed at the same time.

^{†††} Requires Fax capability for use.

[▲] Requires PCL Printer Kit-AK1 for C1030.

^{▲▲} Requires Card Reader Attachment Kit-F1 for installation.

^{▲▲▲} Late availability.

Canon
image*ANYWARE*

1-800-OK-CANON
www.usa.canon.com

Canon U.S.A., Inc.
One Canon Plaza
Lake Success, NY 11042

As an ENERGY STAR® Partner, Canon U.S.A., Inc. has determined that these products meet the ENERGY STAR guidelines for energy efficiency. ENERGY STAR and the ENERGY STAR mark are registered U.S. marks. CANON, IMAGERUNNER, and the GENUINE logo are registered trademarks of Canon Inc. in the United States and may also be registered trademarks or trademarks in other countries. IMAGEWARE is a trademark of Canon U.S.A., Inc. in the United States and is a trademark of Canon Inc. in certain other countries. IMAGEANYWARE is a trademark of Canon. All other referenced product names and marks are trademarks of their respective owners and are hereby acknowledged. Some items may not be available at this time; please check for availability. Specifications and availability subject to change without notice.

©2010 Canon U.S.A., Inc. All rights reserved.

Federal Law prohibits copying of certain documents. Violators may be subject to penalties. We suggest that you check with your own legal counsel. Canon U.S.A., Inc. and Canon Canada, Inc. intend to cooperate with Law Enforcement Agencies in connection with claims of unauthorized copying.

0148W841
1110-C1030S/5-25M-DCR

